

Project

Type



Date

Product Code

Designer

# MIDIMAX™ NSP-OBM BLUETOOTH

surface mounted addressable LED ring-baffled spotlight



Shown with Beam Smoother in use

- **Luminaire is equipped with a Xicato XIM Gen4 LED module**, an IOT device with embedded micro-processor and Bluetooth Low Energy chip, controllable via a smart device with iOS or Windows based apps. Features include
  - standard Bluetooth Wireless connectivity
  - addressable individually
  - on/off control
  - dimming to 0.1%. Combination with integral rotary dimmer available as modification.
  - data collection and storage for power consumption and LED performance
  - direct listening to switches and sensors
  - embedded Eddystone, iBeacon and/or AltBeacon beacons
- **Fixture is designed for mounting on a 4" octagonal outlet box** (by others).
- **Optical assembly consists of an internal reflector and a matte black concentric ring baffle which increases beam control**, eliminates spill light and minimizes glare. Ring baffle is equipped with clips to accept one or two of a number of [Optical Accessories](#), including spread lenses, color filters and light reduction screens. A complimentary Beam Smoother is included.
- **Beam spread may be changed by removing the ring baffle**, replacing one 'twist an lock' [reflector](#) with the other, and re-inserting the ring baffle. Luminaire is ordered with a single reflector; the other reflector may be ordered as an accessory.
- **A concealed swivel provides 385° horizontal rotation and vertical adjustment from 0° to 90°**. The swivel is permanently tensioned, allowing the luminaire to remain fixed at any angle.
- **MidiMax luminaires have seamless aluminum housings** and cast aluminum tops for lightweight durability and heat dissipation.
- **For more information, [click here](#)**

MidiMax NSP-OBM **Bluetooth** is a surface mounted 10° or 24° spotlight powered by one of a number of Xicato XIM Gen4 9mm modules, all of which are distinguished by extraordinary color consistency (within 1x2-step MacAdam ellipse). See tables below for wattages and efficacies.

## PRODUCT CODE

For complete product code, list basic unit and select one item from each following box.

<b>Basic Unit</b> .....	LX-XIS-OB-OG
<b>Beam Spread Reflector</b> (specify one to ship with fixture)	
10° narrow spot.....	- 10D
24° spot.....	- 24D
<b>Finish</b>	
white.....	- WH
black.....	- BL
Industrial Silver .....	- SI
custom color.....	- CC
<b>Light Source Output</b>	
700 lumens / CRI 98 Artist .....	- L07A
700 lumens / CRI 80+ standard .....	- L07S
700 lumens / CRI 80+ Vibrant .....	3000K only - L07V
1000 lumens / CRI 98 Artist .....	- L10A
1300 lumens / CRI 80+ standard .....	- L13S
1300 lumens / CRI 80+ Vibrant .....	3000K only - L13V
<b>Light Color</b>	
2700 K .....	- 27K
3000 K .....	- 30K
3500 K .....	- 35K
4000 K .....	- 40K
<b>Circuit Limitations</b>	
Luminaire operates only on circuits with	
• no dimmer on the circuit – or –	
• a 0-10V dimmer on the circuit.	

► For luminaires modified for 50A or 60A track systems, contact factory.

## EXTRA REFLECTORS *Specify as separate line items.*

<b>10° narrow spot reflector</b> .....	XTS-REF10-70
<b>24° spot reflector</b> .....	XTS-REF24-70

## MODIFICATIONS AVAILABLE

Contact factory with quantity for pricing; orders may require shop drawing approval. For modified stem lengths up to 72", add the following to the end of the product code: + number of inches.

## OPTICAL ACCESSORIES ▼ *See next page*

**USB Key**  
To address this fixture from a Windows-based PC, laptop or tablet, a USB key (dongle) is required. Contact factory for USB key.

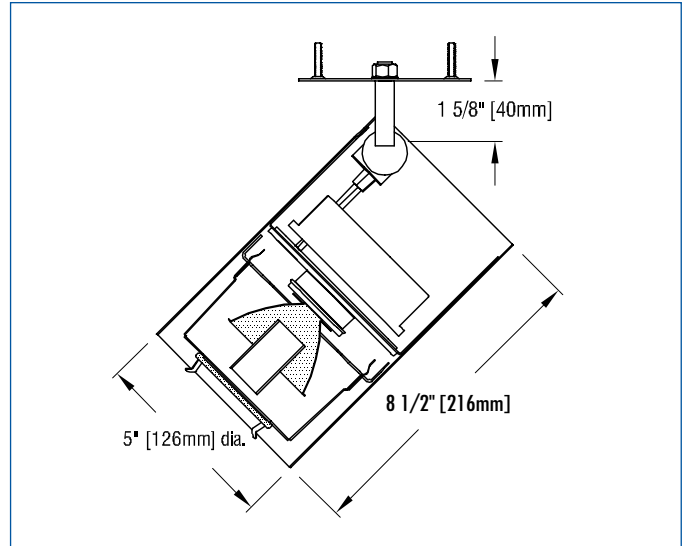


## OPTICAL ACCESSORIES

Specify as separate line items.

All are 2 3/4" (70mm) dia. Lenses and filters are glass; screens are aluminum.

<b>diffuse glass</b> .....	DGS/2.75
<b>prismatic lens</b> (Solite) .....	PLS/2.75
<b>55° spread lens</b> .....	LENS/2.75
<b>40° x 70° spread lens</b> .....	LENS/2.75-4070
<b>beam smoother</b> .....	included with fixture
<b>CLR/2.75</b> .....	CLR/2.75
<b>color filters</b>	
Daylight Blue .....	DAY/2.75
Surprise Pink .....	PNK/2.75
amber .....	AMB/2.75
blue .....	BLU/2.75
green .....	GRN/2.75
red .....	RED/2.75
<b>33% light reduction screen</b> .....	SCR33/2.75
<b>50% light reduction screen</b> .....	SCR50/2.75



## APPLICATIONS

Fixture is suitable for 120-volt electrical service and is listed for mounting on a standard 4" octagonal outlet box (by others).

– see below for photometric reports –



## PHOTOMETRIC REPORT with 10° reflector (tested per IESNA LM-79-2008)

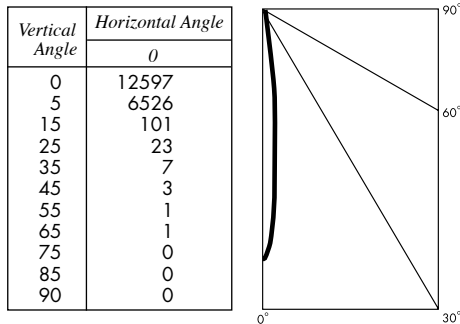
Prorated from Verification Services Report No. 1222997. Original test report furnished upon request.

Luminaire ..... surface-mounted LED accent light with a 10° reflector and black ring-baffle (NO LENS)

Lamp ..... Xicato 9mm XIM LED Module, 1300 lumens, 3000K, 80 CRI

Lamp Life ..... rated 50.000 hours based on L70/B50 criteria. LM80 report by LED manufacturer furnished upon request

### CANDLEPOWER DISTRIBUTION



### LUMINAIRE LIGHT OUTPUT AND EFFICACY

LED Module Type	Luminaire Light Output	Luminaire CBCP	Luminaire Efficacy (lms/watt)	System Wattage
700 Lumens Artist	275*	6928*	20*	14
700 Lumens standard & Vibrant	275*	6928*	25*	11
1000 Lumens Artist	385*	9700*	17*	23
1300 Lumens standard & Vibrant	500	12,597	26	19

\*estimated values

## PHOTOMETRIC REPORT with 24° reflector (tested per IESNA LM-79-2008)

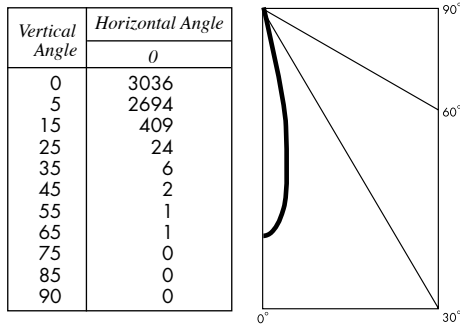
Prorated from Verification Services Report No. 122998. Original test report furnished upon request.

Luminaire ..... surface-mounted LED accent light with a 24° reflector and black ring-baffle (NO LENS)

Lamp ..... Xicato 9mm XIM LED Module, 1300 lumens, 3000K, 80 CRI

Lamp Life ..... rated 50.000 hours based on L70/B50 criteria. LM80 report by LED manufacturer furnished upon request

### CANDLEPOWER DISTRIBUTION



### LUMINAIRE LIGHT OUTPUT AND EFFICACY

LED Module Type	Luminaire Light Output	Luminaire CBCP	Luminaire Efficacy (lms/watt)	System Wattage
700 Lumens Artist	205*	1670*	15*	14
700 Lumens standard & Vibrant	205*	1670*	19*	11
1000 Lumens Artist	287*	2338*	12*	23
1300 Lumens standard & Vibrant	373	3036	19	19

\*estimated values

## STANDARD DRIVER INFORMATION (UL Class 2, dry and damp location)

Voltage	120	277
Input Watts (L07A/L10A/L07S&V/L13S&V lumens)	14/23/11/19	14/23/11/19
Input Current(A) (L07A/L10A/L07S&V/L13S&V lumens)	.12/.19/.09/.16	.05/.08/.04/.07
Min. Power Factor	.99	.99
Operating Temperature Range (F)	-13 to 122	-13 to 122

## LIGHT OUTPUT MULTIPLIER

LED Module Type	Light Output Multiplier
700 Lumens Artist	.55*
700 Lumens standard & Vibrant	.55*
1000 Lumens Artist	.77*
1300 Lumens standard & Vibrant	1

\*estimated values