

Project

Date

Product Code

Type

Designer



EPIC APLUS 19E/6

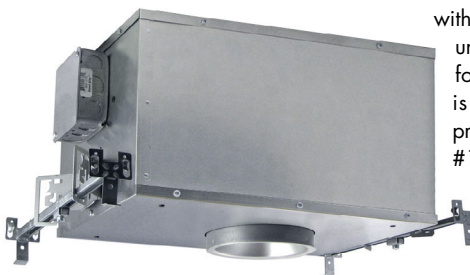
recessed IC LED A lamp downlight/wallwasher

COMPETITIVELY PRICED - EPL QUALITY - COMPETITIVELY PRICED - EPL QUALITY - COMPETITIVELY PRICED - EPL QUALITY - COMPETITIVELY PRICED

FEATURES

- **EPIC APlus 19E/6 is a 6" aperture downlight/wallwasher** designed for insulation contact (IC) and certified airtight under ASTM E283.
- **Fixture has been checked for fit and initial operation** with A19 LED retrofit lamps manufactured by
 - Cree
 - Green Creative
- **Additional lamps may be suitable.** Contact factory with inquiries.
- **One basic housing allows interchangeable use of the downlight and wallwash reflectors.** This permits housings to be installed first and reflectors installed or changed at any time. Wallwash reflectors available are: wallwash (120°), corner wallwash (210°), and double wallwash (2x120°).
- **The fixture provides a shielding angle of 40°.** Precise reflector design minimizes aperture brightness.
- **Housing is constructed from 0.032" thick aluminum** in Edison Price Lighting's American factory. The aluminum's superior heavy-gauge guarantees long-lasting durability. Its high thermal conductivity quickly dissipates heat, further extending the lifetime of the retrofit LED lamp.
- **Reflectors are available in three clear natural aluminum finishes** — semi-specular (C), slightly diffuse (V) or fully diffuse (EC) — as well as champagne gold Alzak®. Other reflector finishes are available on special order.
- **Fixture includes a pair of residential mounting bars** extendable to 20" and designed for use in wood joists.
- **For more information, [click here](#).**

APPLICATIONS



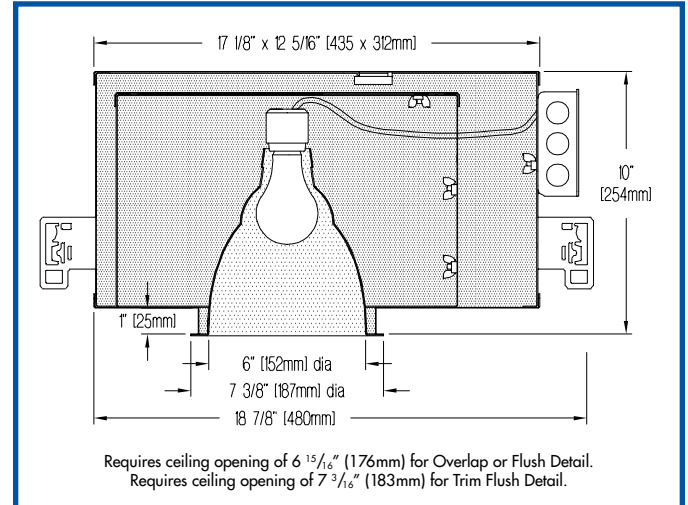
Fixture is listed for direct contact with insulation; certified airtight under ASTM E283; suitable for damp location. Fixture is prewired with thermal protector, approved for ten #12 wire 90°C branch circuit pull-through wiring and suitable for use in a fire rated ceiling. Removal of the reflector allows access

MODIFICATIONS AVAILABLE

Contact factory with quantity for pricing; orders may require shop drawing approval.

- **+2" CLG:** fixture suitable for installation in **2" thick ceiling** material; add +2" CLG to Product Code.
- **+DOD:** fixture suitable for **high humidity** environments; add +DOD to Product Code.
- **+MAR:** reflector suitable for **marine** environments; add +MAR to Product Code.

Standard recessed, see [APLUS 19E/6](#)
 Install-from-below, see [Presto APLUS 19E/6](#)
 Surface and pendant mounted, see [APLUS 19E SM and PM](#)



PRODUCT CODE

For complete product code, list basic unit and select one item from each following box.

Basic Unit	EPIC A19/6	
Reflector Type		
Downlight	no suffix	
Wallwash	WW	
Corner Wallwash	CWW	
Double Wallwash	DWW	
Half Wallwash	HWW	
Reflector Color and Detail	Overlap	Trim Flush*
Semi-specular Clear	COL	CTF
Slightly diffuse Clear	VOL	VTF
Fully diffuse Clear	ECOL	ECTF
Champagne Gold	GOL	GTF
Other reflector finishes are available on special order.		
Overlap Flange continues reflector finish. White painted flanges and custom painted flanges are available on special order. Add WF (white flange) or CCF (custom color flange).		
*Trim Flush reflector trim requires the use of a plaster ring Accessory (see below).		
▶ Reflectors detailed for metal or wood ceilings available on special order.		

ACCESSORIES

Specify as separate line items.
Plaster ring allows use of 6 7/8" OD Trim Flush (-TF) reflector in sheetrock ceiling; 7 3/16" dia hole required TF RING/6

LAMPS BY OTHERS
 Lamp (lightbulb) not included with fixture.
DIMMING
 For dimming compatibility consult the lamp manufacturer's website.



PHOTOMETRIC REPORT

Prorated from Report No. 32783. Original Independent Testing Laboratories, Inc. (ITL) test report furnished upon request.

Luminaire recessed incandescent with spun aluminum reflector, specular finish
 Lamp 100-watt A-19, 1690 lumens
 Efficiency 67.2%
 Spacing Criterion..... 1.0

ZONAL LUMEN SUMMARY

Zone	Lumens	% Lamp	% Fixture
0 - 30°	631	37	56
0 - 40°	962	57	85
0 - 60°	1130	67	100
0 - 90°	1134	69	100
90 - 180°	0	0	0
0 - 180°	1134	67	100

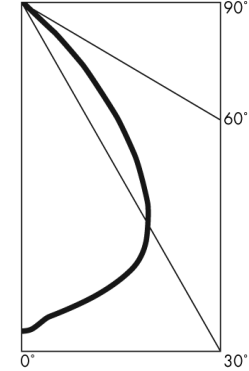
LUMINANCE DATA

Vertical Angle	Candela/m ²
45	16048
55	478
65	259
75	212
85	0

To convert cd/m² to footlamberts multiply by 0.2919.

CANDLEPOWER DISTRIBUTION

Vertical Angle	Candela
0	846
5	812
15	775
25	730
35	548
45	207
55	5
65	2
75	1
85	0
90	0



COEFFICIENTS OF UTILIZATION – ZONAL CAVITY METHOD

Effective Floor Cavity Reflectance 20%

Ceiling Reflectance (%)	80				70				50				30				10				0							
Wall Reflectance (%)	70	50	30	10	70	50	30	10	50	30	10	50	30	10	50	30	10	50	30	10	50	30	10	50	30	10		
Room Cavity Ratio																												
0	80	80	80	80	78	78	78	78	75	75	75	71	71	71	69	69	69	67	67	67	67	67	67	67	67	67	67	67
1	76	75	73	71	75	73	72	70	70	69	68	68	67	66	66	65	64	63	63	63	63	63	63	63	63	63	63	63
2	73	70	67	65	71	69	66	64	67	65	63	65	63	62	63	61	60	59	59	59	59	59	59	59	59	59	59	59
3	69	65	62	60	68	64	61	59	63	60	58	61	59	57	60	58	56	55	55	55	55	55	55	55	55	55	55	55
4	66	61	58	55	65	60	57	55	59	56	54	58	55	53	56	54	53	52	52	52	52	52	52	52	52	52	52	52
5	63	57	53	50	61	56	53	50	55	52	50	54	51	49	53	51	49	48	48	48	48	48	48	48	48	48	48	48
6	59	53	50	47	58	53	49	47	52	49	46	51	48	46	50	48	46	45	45	45	45	45	45	45	45	45	45	45
7	56	50	46	43	55	49	45	43	48	45	43	48	45	42	47	44	42	41	41	41	41	41	41	41	41	41	41	41
8	53	46	42	39	52	46	42	39	45	42	39	44	41	39	44	41	39	38	38	38	38	38	38	38	38	38	38	38
9	50	43	39	36	49	42	39	36	42	38	36	41	38	36	41	38	36	35	35	35	35	35	35	35	35	35	35	35
10	47	40	36	33	46	39	36	33	39	35	33	38	35	33	38	35	33	32	32	32	32	32	32	32	32	32	32	32

EPIC APLUS 19E/6 WW

WALLWASH INFORMATION

Distance From Ceiling (Feet)	2'6" From Wall; 2'6" O.C.		3' From Wall; 3' O.C.	
	Below Fixture	Between Fixtures	Below Fixture	Between Fixtures
1	14	15	9	9
2	21	20	13	12
3	25	25	16	15
4	23	23	17	17
5	18	18	15	15
6	14	14	13	12
7	11	10	10	10
8	8	8	8	8
9	6	6	6	6

All vertical footcandles are initial values with no contribution from ceiling or floor reflectances. Computation performed with a total of five wallwashers.