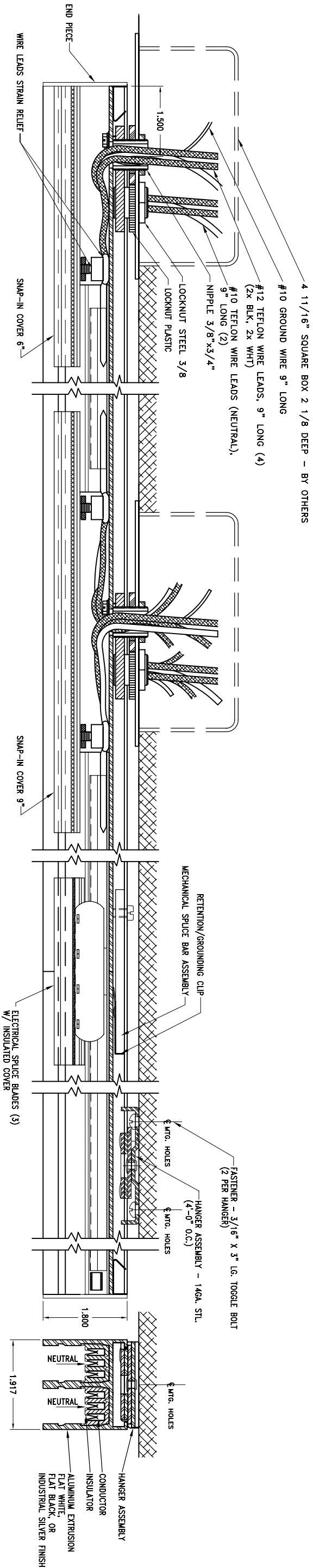
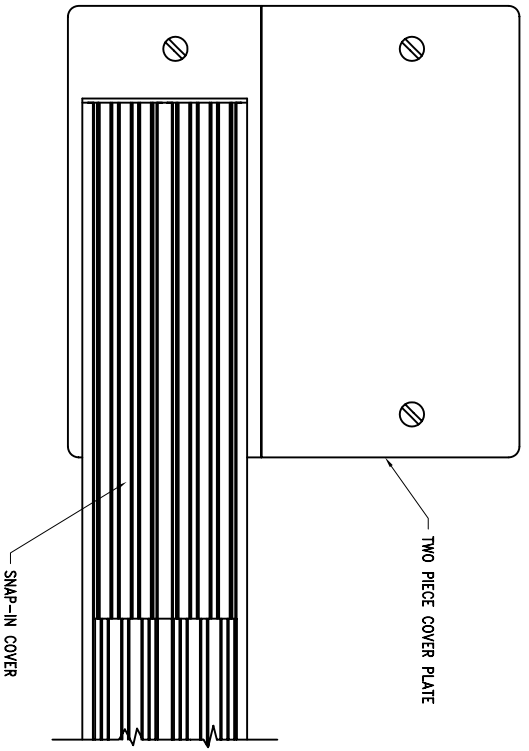


END FEED SECTION



- APPLICATION NOTES:
- 1) TWO TRACK CHANNELS EACH CAPABLE OF TWO, 20 AMP, 120 VOLT CIRCUITS
 - 2) PROVIDE SUPPLY WIRE SUITABLE FOR 75°C
 - 3) 4" MAXIMUM SPACING BETWEEN HANGERS



DESIGNED BY	DATE		REVISION	SCALE	BOM #
DRAWN BY	DATE		DWG SIZE	SHT. OF	DWG
SUBMITTED BY	DATE	41-50 2nd STREET LIC, NY 11101 TEL: 718.685.0700 FAX: 718.706.1628 E-MAIL: DESIGN@EPL.COM	PROJECT		
PARTURE		DOUBLELINE S			
PROJECT					